

Fluted knobs with locking thrust pad

Technopolymer

MATERIAL

- Polyamide-based (PA) technopolymer knob, black colour, matte finish.
- AISI 303 stainless steel threaded stud, spherical end.
- Acetal resin based (POM) technopolymer thrust pad, black colour, matte finish, supplied not assembled.

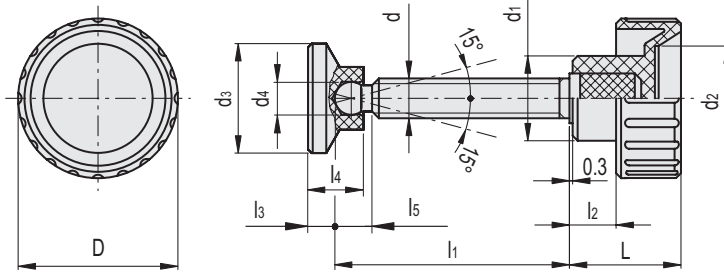
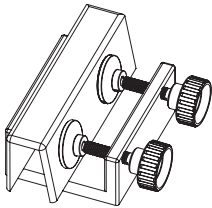
FEATURES AND APPLICATIONS

The BT-SST-p-SV knobs allow the locking of a component avoiding, thanks to the thrust pad, direct contact of the stud with the surface to be locked.

The metal insert in AISI 303 stainless steel can be used in sectors where corrosion resistant materials are required.



Application example



ELESA Original design

STAINLESS STEEL

Code	Description	D	d6g	L	d1	d2	d3	d4	l1	l2	l3	l4	l5	⚖
108645	BT.25-SST-p-M6x25-SV15	26	M6	19	16	15	15	4.5	25	8	3.5	7.5	5	26
108648	BT.25-SST-p-M6x35-SV15	26	M6	19	16	15	15	4.5	35	8	3.5	7.5	5	30
108649	BT.25-SST-p-M6x45-SV15	26	M6	19	16	15	15	4.5	45	8	3.5	7.5	5	30
108701	BT.32-SST-p-M8x30-SV18	32	M8	22	17	21	18	6	30	9	4	9	6	43
108703	BT.32-SST-p-M8x40-SV18	32	M8	22	17	21	18	6	40	9	4	9	6	45
108705	BT.32-SST-p-M8x50-SV18	32	M8	22	17	21	18	6	50	9	4	9	6	47
108711	BT.32-SST-p-M8x30-SV21	32	M8	22	17	21	21	6	30	9	5	10	6	45
108713	BT.32-SST-p-M8x40-SV21	32	M8	22	17	21	21	6	40	9	5	10	6	47
108715	BT.32-SST-p-M8x50-SV21	32	M8	22	17	21	21	6	50	9	5	10	6	49
108721	BT.32-SST-p-M8x30-SV25	32	M8	22	17	21	25	6	30	9	5.5	10.5	6	47
108723	BT.32-SST-p-M8x40-SV25	32	M8	22	17	21	25	6	40	9	5.5	10.5	6	49
108725	BT.32-SST-p-M8x50-SV25	32	M8	22	17	21	25	6	50	9	5.5	10.5	6	51
108731	BT.32-SST-p-M8x30-SV32	32	M8	22	17	21	32	6	30	9	6	11	6	49
108733	BT.32-SST-p-M8x40-SV32	32	M8	22	17	21	32	6	40	9	6	11	6	51
108735	BT.32-SST-p-M8x50-SV32	32	M8	22	17	21	32	6	50	9	6	11	6	53
108741	BT.32-SST-p-M8x30-SV40	32	M8	22	17	21	40	6	30	9	8	13	6	52
108743	BT.32-SST-p-M8x40-SV40	32	M8	22	17	21	40	6	40	9	8	13	6	53
108745	BT.32-SST-p-M8x50-SV40	32	M8	22	17	21	40	6	50	9	8	13	6	55
108801	BT.40-SST-p-M10x35-SV21	40	M10	27	19	25	21	8	35	13	4	10	7.5	52
108803	BT.40-SST-p-M10x45-SV21	40	M10	27	19	25	21	8	45	13	4	10	7.5	54
108805	BT.40-SST-p-M10x55-SV21	40	M10	27	19	25	21	8	55	13	4	10	7.5	56
108811	BT.40-SST-p-M10x35-SV25	40	M10	27	19	25	25	8	35	13	4.5	10.5	7.5	54
108813	BT.40-SST-p-M10x45-SV25	40	M10	27	19	25	25	8	45	13	4.5	10.5	7.5	56
108815	BT.40-SST-p-M10x55-SV25	40	M10	27	19	25	25	8	55	13	4.5	10.5	7.5	58
108821	BT.40-SST-p-M10x35-SV32	40	M10	27	19	25	32	8	35	13	5	11	7.5	56
108823	BT.40-SST-p-M10x45-SV32	40	M10	27	19	25	32	8	45	13	5	11	7.5	58
108825	BT.40-SST-p-M10x55-SV32	40	M10	27	19	25	32	8	55	13	5	11	7.5	60
108831	BT.40-SST-p-M10x35-SV40	40	M10	27	19	25	40	8	35	13	7	13	7.5	59
108833	BT.40-SST-p-M10x45-SV40	40	M10	27	19	25	40	8	45	13	7	13	7.5	61
108835	BT.40-SST-p-M10x55-SV40	40	M10	27	19	25	40	8	55	13	7	13	7.5	63