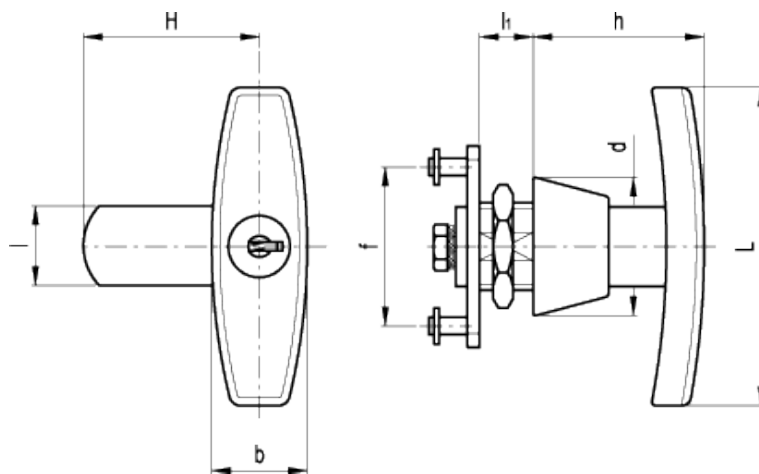


# CSM.

Latch-type handles with lock



technical informations  
**Handle and stator**  
Glossy chrome-plated zinc alloy.

## **Rotor**

Chrome-plated zinc alloy.

## **Front plate**

Stainless steel.

## **Nut**

Brass (M22x1.5).

## **Spring washer**

Black-oxide steel.

### Washer

Zinc-plated steel.

### Closing levers

Zinc-plated steel flat and two-point closing lever, thickness 3 mm.

### Screw

Zinc-plated steel (M7x10).

### Two keys

Nickel-plated brass, removable in two positions at 180°.

### Rotation

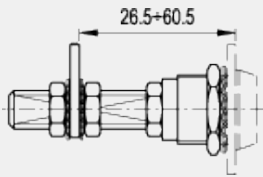
90° right.

### Standard executions available

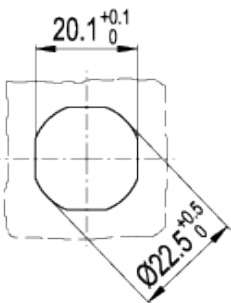
- CSM.: lock with 400 different combinations. Each lock has a key with different combination.
- CSMU.: lock with one combination. All locks have a key with the same combination.

### Special executions and accessories (For sufficient quantities)

- Closing levers in other dimensions.
- Brass threaded extension for prolonged positioning of the lever (code 421140 description C.PQ M7/53).



### Drilling template



Standard Elements		Main dimensions								Weight
Code	Description	H	L	b	h	d	l	l <sub>1</sub>	f	g
421511	CSM.50	50	80	24	43	35	20	13.5	42	240
421513	CSMU.50	50	80	24	43	35	20	13.5	42	240



drawings.

**STANDARD MACHINE ELEMENTS WORLDWIDE**